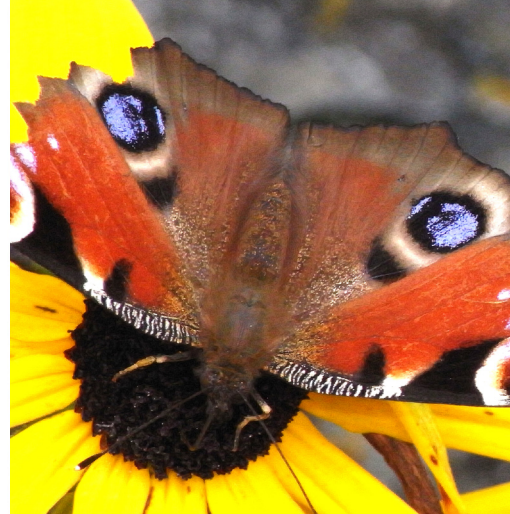


# APPLICATION TO ENTER The CLA Charitable Trust's 'BUTTERFLY BARREL' COMPETITION

Little Bentley Hall, Waterways & Garden Show

 **5th-6th June 2010**



We are pleased to invite all schools and youth groups in Essex, Suffolk and surrounding counties to enter the Flowering Container Competition at the Little Bentley Hall Garden Show to be held from 5th-6th June 2010 in the gardens of Little Bentley Hall, near Colchester, Essex, CO7 8SD. The home of Christopher and Virginia Palmer-Tomkinson.

This will be one of the largest charity garden show in East Anglia in 2010 and will include 70 Trade Stands, an Art Show, Antiques Valuations and a Children's Corner, in addition, the private gardens will be open for all. The entry fee to the public will be kept to a low £7 to encourage visitors with Children Under 15 Free.

The theme for the Flowering Container Competition is a 'Butterfly Barrel' and the finished container can be anything in which the plants can grow successfully (ie have free drainage etc). The filled container must be freestanding and reasonably portable in order that it can be moved to the showground site without the use of machinery (such as a fork-lift) therefore a stone trough might not be appropriate! Innovative, home-made or recycled containers will be looked upon very favourably.

#### Maximum height and width of container: 80cm x 80cm.

The plants should include flowers that will attract butterflies, moths and beneficial insects. **The most attractive scheme with plenty of native and other species to attract the 'good bugs' and butterflies will receive the most points** (there are many lists on the Internet of such plants). As the show is early in the season you can include certain flowers and grasses, even if they are not at maximum flowering point.

An accompanying board showing work by the children – for example drawings of 'good bugs' and butterflies or other related pictures or notes – may also be part of the display, but this is not essential. Boards should be laminated, as they will be outside, and have a maximum size of 80cm x 100cm.

The winning entries will receive a prestigious award and the winning school will also receive additional prizes.

Entries must be made by 15th May 2010 at the latest to guarantee acceptance in the show, and all containers must be delivered/displayed at the show no later than 4pm on Friday 4th June 2010. They may be delivered/displayed on Thursday 3rd June. There is a refundable entry fee of £10 which must be sent with your entry – but we hope you will wish to give this as a Donation to our Charities – which will only be forfeited for non-attendance.

Please accept our £10 as a Donation to the show Charities: Army Benevolent Fund, local Church, Rotary, CLA Charitable Trust and other Charities.



Name of School: \_\_\_\_\_

Contact: \_\_\_\_\_

Position: \_\_\_\_\_

Address: \_\_\_\_\_

Postcode: \_\_\_\_\_

Tel No: \_\_\_\_\_

Email: \_\_\_\_\_

Cheques should be made payable to 'Little Bentley Hall Garden Show' and your entry form should be posted to:  
Garden Show Entries, Bentley Manor, Little Bentley, Colchester CO7 8SE

Tel: 07802 282193 / 01206 251790 Email: [ngd@freenet.co.uk](mailto:ngd@freenet.co.uk) [www.littlebentley.net](http://www.littlebentley.net)

The Flowering Container Competition is sponsored by The CLA Charitable Trust, a national charity which provides education about and facilities in the countryside for disabled and disadvantaged people.

For information about the Trust's work contact Peter Geldart, Director of the CLA Charitable Trust, Cauntun Grange, Cauntun, Newark, Nottinghamshire NG23 6AB. Tel/Fax: 01636 636171



**Charitable Trust**  
REGISTERED CHARITY NO. 280264

